

# Product Catalog 2026

## End-to-End Networking Solutions for AI Data Center

Data Center / AI

[www.exaware.com](http://www.exaware.com) | [info@exaware.com](mailto:info@exaware.com)  
Your friendly partner in networking

© 2026 Exaware Networks LTD.

# End-To-End DC Networking Solutions

## AI DATA CENTER NETWORKING

### AI Data Center: Enabling the Connectivity of the AI Revolution

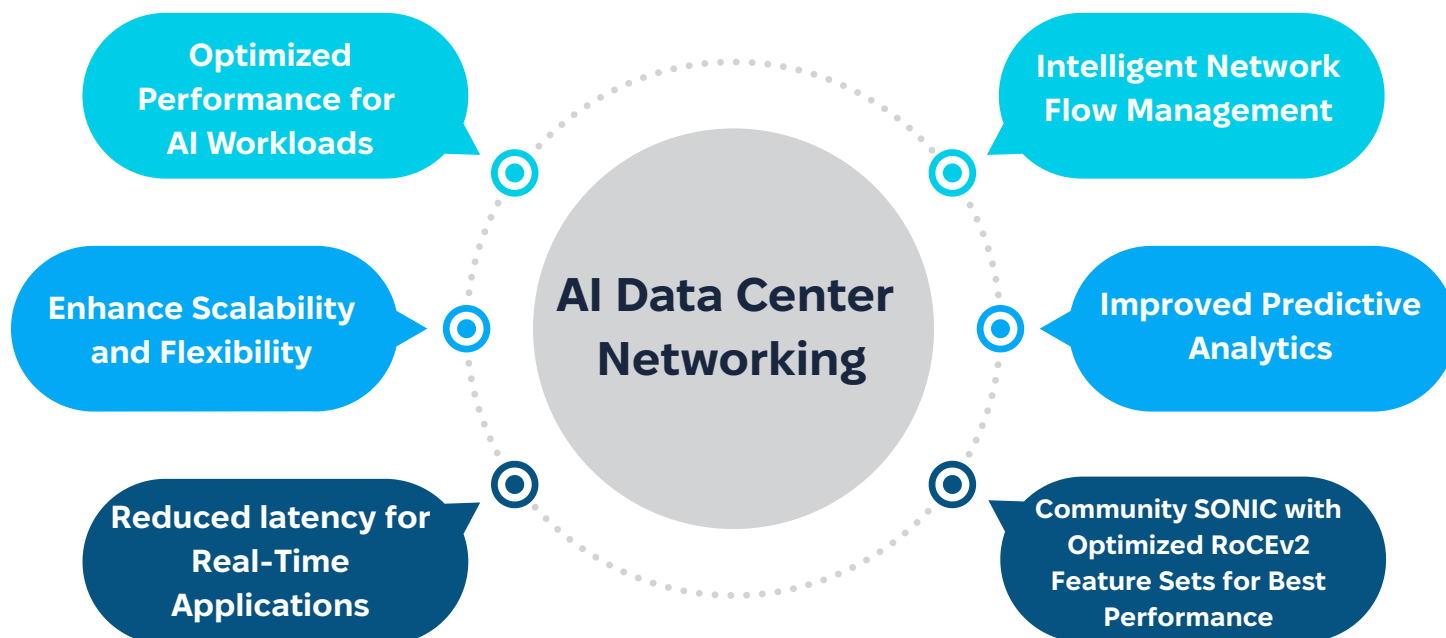
Almost every industry is now seeking new AI functionality to streamline processes and improve results. In this evolving digital landscape, AI data Centers are at the heart of the AI revolution making seamless connections possible and offering unmatched processing power that sparks innovation across different fields.

Exaware DC/AI networking solution help customers enhance network efficiency, reduce congestion, and expedite job completion times (JCB) for extensive AI/ML workloads.

With Exaware end-to-end solution, you are guaranteed to fulfill all your data center networking needs - open source SONiC for spine and leaf and management switch together with ExaNOS high scale BGP and MPLS solution for the data center gateway, together with monitoring and automation system for smooth operation.



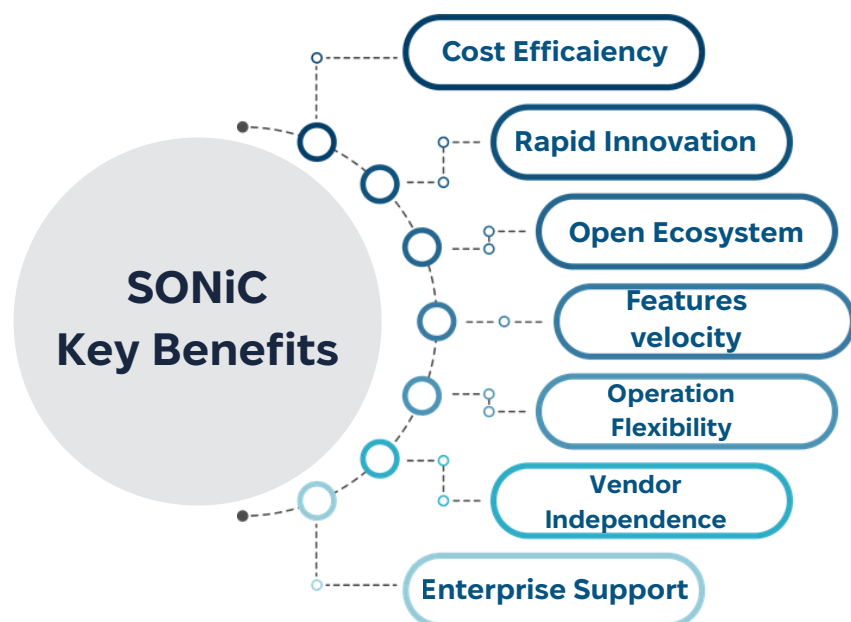
### Key Benefits of AI Data Center Networking



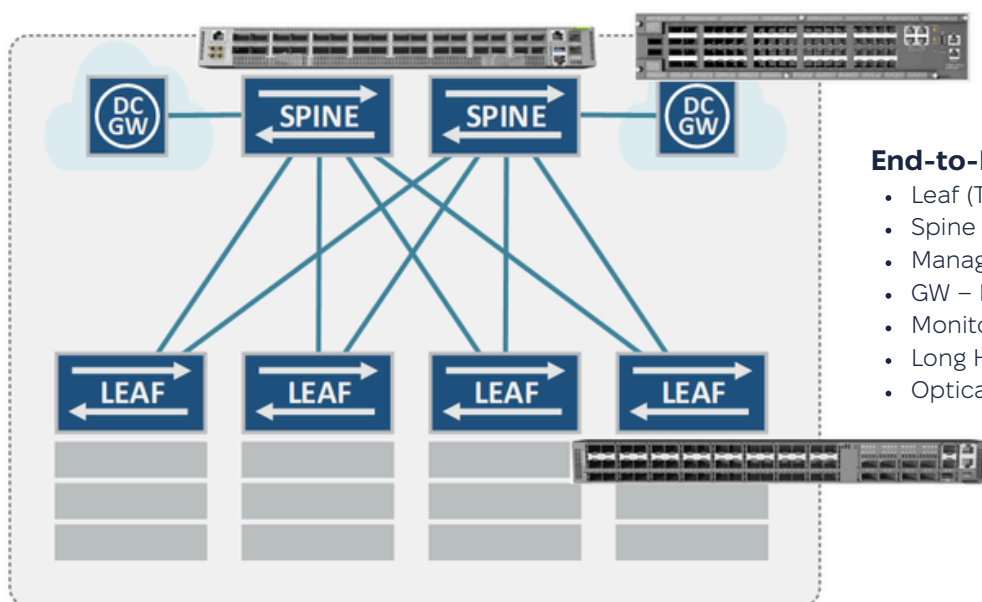
# WHY USING SONIC?

When selecting your networking solution for your data center, choosing SONiC over closed, proprietary systems empowers you to avoid vendor lock-in and gain flexibility in both hardware and software. SONiC's open, modular architecture enables you to adopt the latest innovations more quickly, scale efficiently, and optimize costs by leveraging a broad ecosystem of hardware platforms. By selecting a hardened SONiC distribution backed by an established vendor, you also gain the enterprise-grade reliability, security updates, and professional support that are critical for mission-critical environments. This approach combines the openness and cost advantages of disaggregation with the operational assurance of vendor validation, ultimately giving your organization greater agility, reduced total cost of ownership, and stronger control over its technology roadmap.

## Key Benefits of AI Data Center Networking

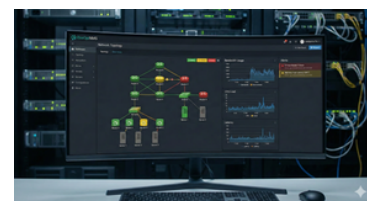


## END-TO-END NETWORKING SOLUTION



### End-to-End DC-AI Solution

- Leaf (Top of rack)
- Spine – high-capacity interconnect
- Management switches
- GW – Full scale BGP Solution
- Monitoring and Automation - ExaMon
- Long Haul Optics and DWDM Gateway
- Optical transceivers



# AI SWITCH - BACKEND AND FRONTEND

The AIS series comprises a compact switch design with 800G port breakout options of 2 x 400 G, 4 x 200G, and 8 x 100G per port, providing a maximum of 320 logical interfaces while offering an impressive 51.2 Tbps non-blocking bandwidth. With configuration flexibility supporting either 64 x 800G, and a 2X throughput increase compared with TH4 64 x400G this AI switch series represents a powerful, high - radix and energy-efficient networking fabric solution, utilizing advanced 5nm process technology.

## AI SWITCH UNLEASHING 102.4T OF ULTIMATE COMPUTING

### XAI1600-640-A



- ToR/Leaf/Spine/SuperSpine
- Switch 64 x 1.6T OSFP1600 ports
- 102.4 Tbps
- Broadcom Tomahawk 6
- Intel Xeon Processor D-1713NTE

## 800G AI DATA CENTER NETWORKING SWITCH

### XAI800-640-A



- ToR/Leaf/Spine/SuperSpine
- 64 x 800G OSFP800 ports
- 51.2 Tbps
- Broadcom Tomahawk 5
- Intel Xeon Processor D-1713NTE

### XAI800-64D-A



- ToR/Leaf/Spine/SuperSpine
- 64 x 800G QSFP-DD800 ports
- 51.2 Tbps
- Broadcom Tomahawk 5
- Intel Xeon Processor D-1713NTE

### XAI800-320-A



- ToR/Leaf/Spine/SuperSpine
- 32 x 800G OSFP800 ports
- 25.6 Tbps
- Broadcom Tomahawk 5
- Intel Xeon Processor D-1713NTE

### XAI800-32D-A



- ToR/Leaf/Spine/SuperSpine
- 32 x 800G OSFP800 ports
- 26.6 Tbps
- Broadcom Tomahawk 5
- Intel Xeon Processor D-1713NTE

## 400G SOLUTIONS

The industry's first delivers the next level in bandwidth for webscale data center fabrics. the ideal choice for high-speed spine interconnection as bandwidth demand increases.

### 400G OPEN NETWORKING SWITCH

#### XDC400-32DL-A



- 32 X 400 QSFP56-DD ports
- ZR/ZR+optics
- Broadcom XGS trident 4
- Intel Pentium D-1519

#### XDC400-32D-A



- 32 X 400 QSFP56-DD ports
- Broadcom XGS Tomahawk 3
- Intel Pentium D-1518

#### XDC401-32D-A



- 32 X 400 QSFP56-DD ports
- Broadcom XGS Tomahawk 4
- Intel Xeon D-1713NTE

#### XDC400-64D-A



- 64 X 400 QSFP56-DD ports
- Broadcom XGS Tomahawk 4
- Intel Pentium D-1548

# 100G SOLUTIONS

High-performance data center switches for TOR and spine network deployment, providing a non-blocking fabric in flatter and scalable topologies.

## LEAF/SPINE SWITCH

### XDC100-32X -A



- 32 × 100G QSFP28 ports
- Up to 32 × 400G (breakout)
- Leaf / Spine switch
- Broadcom XGS Trident 3
- Intel Pentium D-1518

### XDC100-64X-A



- 64 × 100G QSFP28 ports
- Spine switch
- Broadcom XGS Tomahawk 2
- Intel Xeon D-1518

# 25G/10G DATA CENTER

High-performance Top or spine data center switches, designed for computing clusters and high-frequency trading applications, supporting 10/25 GbE to server with 40/100 GbE uplinks.

### XDC25-56X-A



- 48 × 25G SFP28 ports
- 8 × 100G QSFP28 uplink ports
- Broadcom XGS Trident 3
- Intel Xeon D-1518
- Top of Rack (ToR) switch

### XDC10-54T-A



- 48 × 10GBase-T ports
- 6 × 100G QSFP28 uplink ports
- Broadcom XGS Trident 3
- Layer 2/3 switch
- Non-blocking architecture

### XDC10-54X-A



- 48 × 10G SFP+ ports
- 6 × 100G QSFP28 uplink ports
- Broadcom XGS Trident 3
- Intel Atom C3558
- Top of Rack (ToR) switch

# 1G AND MULTI-RATE CENTER AND CAMPUS EDGE

A series of 1 G open access switch designs that are ideal as a data center IPMI switch, providing out-of-band management connectivity, or as an enterprise access switch. In addition, the series of 1 G multi-gigabit, open PoE access switches are ideal for large enterprises, retail, and campus edge deployment, with different options for high PoE budgets that provide high-density connectivity for Wi-Fi 6/6E Aps and upcoming Wi-Fi 7 APs, security cameras, PTZ cameras, IP Phones and IoT devices to emerging immersive applications.

## 1G MANAGMENT SWITCH

### XDC1-54T-A



- 48 x 1GbE ports
- 6 x 1G/10G SFP+ uplink ports
- Broadcom XGS Trident 3X2
- Intel Atom C3508, 4 cores

## ACCESS POE SWITCH

### XDC-54P-A



- 48 x 1G RJ45 PoE ports
- 4 x 25G ports
- 2 x 100G ports
- Broadcom Trident 3
- Intel Atom C3558R

## ACCESS / TOR SWITCH

### XDC1-54PE-A



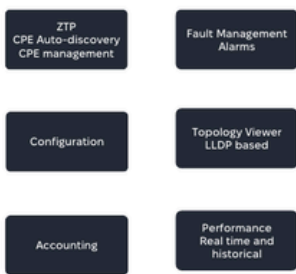
- 48 x 1G RJ45 PoE ports
- 4 x 25G ports
- 2 x 100G ports
- Broadcom Trident 3
- Intel Atom C3558R

# EXAMON

**ExaMon** is Exaware's unified network management solution with full visibility and control over the networking infrastructure. Built entirely on best-of-breed open-source components — including Grafana for monitoring and alarm display dashboards and Ansible for configuration and automation — **ExaMon** leverages native SONiC telemetry via gNMI/gRPC streaming to capture real-time network state.

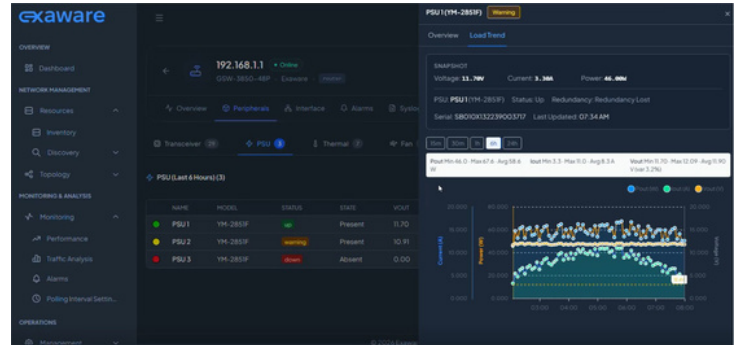
The solution is delivered as a ready-to-deploy blueprint with customization support by Exaware, or seamlessly integrated into existing management and automation tools through standard APIs. Its horizontally scalable architecture ensures the monitoring stack grows independently of the network elements, while the fully open-source, Linux/OCP-based foundation eliminates vendor lock-in — giving operators complete ownership of their code and data with minimal licensing costs and community-driven maintenance.

Whether deploying a greenfield data center fabric or augmenting an existing environment, **ExaMon** provides a future-proof, OpEx-efficient platform that automates, configures, and monitors the entire network end to end.



## Highlight

- Designed for high scale, network wide E2E, home level ZTP and monitoring
- Tailored to aggregation and access networks
- Easy navigation and monitoring
  - Top-down view of performance metrics and alarms
  - Device auto discovery and/or csv import
  - Auto topology view



**Layer 2**

- DHCP Snooping
- IGMP Snooping
- LAG (LACP)
- LLDP
- MAC Aging
- MC-LAG
- MSTP
- Port Mirroring
- QinQ (802.1Q Tunneling)
- STP/PVST
- TPID Configuration
- VLAN Translation
- VLAN/VLAN Trunk

**Layer 3**

- BGP
- BGP Graceful Restart
- BGP Graceful Restart Helper
- BGP Multi-protocol
- BGP Unnumbered Links
- Critical Resource Monitoring
- ECMP
- EVPN/VxLAN
- VPN Multihoming
- IPv6
- IS-IS
- NAT
- OSPF
- Proxy ARP
- Static Anycast Gateway
- VRF
- VRRP
- VxLAN

**Security Features**

- COPP
- Ingress/Egress ACL Permit/Deny
- Port MAC Security
- RADIUS
- TACACS+

**QoS**

- Asymmetric PFC
- CoS
- Differentiated Services (DiffServ)
- DSCP
- ECN
- Egress Port Shaping (port, queue)
- Ingress ACL-based Mirroring (ERSPAN)
- PFC-WD
- PFC Watermark
- Port Rate Limiting
- Priority Flow Control (PFC)
- WRED

**Management and Monitoring Features**

- CLI/SSH
- DHCPv6 Relay

- Dynamic Port Breakout
- Everflow
- Fast Reload
- Kubernetes
- Management VRF
- MTU Setting
- NTP
- Object Track for Port Interface
- OpenSSH/SCP/SFTP
- PINS
- Platform Monitoring
- Port Speed Setting
- RoCEv2
- Sensor Transceiver Monitoring
- sFlow
- SNMP/SNMPv2
- Telemetry Support
- Thermal Monitor
- Warm Reboot
- Zero Touch Provisioning (ZTP)

**Standards Compliance**

- RFC792 ICMP Specifications
- RFC1157 Simple Network Management Protocol (SNMP)
- RFC1213 MIB-II Specifications
- RFC1213 Management Information Base for Network Management of TCP/IP-based internets: MIB-II
- RFC1267 Border Gateway Protocol 3 (BGP-3)
- RFC1771 A Border Gateway Protocol 4 (BGP-4)
- RFC1772 Application of the Border Gateway Protocol in the Internet
- RFC1901 Introduction to Community-based SNMPv2
- RFC1902 Structure of Management Information for Version 2 of the Simple Network Management Protocol (SNMPv2)
- RFC1905 Protocol Operations for Version 2 of the Simple Network Management Protocol (SNMPv2)
- RFC1907 SNMP MIB Specifications
- RFC1965 AS Confederations for BGP
- RFC1966 BGP Specifications
- RFC1981 Path MTU Discovery for IP version 6
- RFC1997 BGP Communities Attribute
- RFC2011 IP MIB Specifications
- RFC2012 Management Information Base for the Transmission Control Protocol (TCP)
- RFC2013 SNMPv2 Management Information Base for the User Datagram Protocol using SMIv2
- RFC2068 HTTP Specifications
- RFC2101 IPv4 Address Behaviour Today
- RFC2138 RADIUS Specifications
- RFC2270 Using a Dedicated AS for Sites Homed to a Single Provider
- RFC2283 Multiprotocol Extensions for BGP-4
- RFC2328 OSPF Specifications
- RFC2370 OSPF Opaque LSA Option Specifications
- RFC2373 IP Version 6 Addressing Architecture
- RFC2374 An IPv6 Aggregately Global Unicast Address Format
- RFC4760 Multiprotocol Extensions for BGP-4
- RFC7348 Virtual eXtensible Local Area Network (VXLAN): A Framework for Overlaying Virtualized Layer 2 Networks over Layer 3 Networks
- IEEE802.1D Spanning Tree Protocol
- IEEE802.1p Priority tagging implementation idea
- IEEE802.1AB Link Layer Discovery Protocol
- IEEE802.1ad QinQ, VLAN Stacking
- IEEE802.3ad Link aggregation (LAG), bound mode 4 (LACP)

**About Exaware Networks LTD.** About Exaware Routing LTD. Exaware Routing LTD is providing end-to-end networking solutions for the data center, enterprise and telco/ISP networks - including HW, SW, management systems, support and professional services. Exaware Routing LTD delivers the software and systems that transform the way the world connects and serves customers and partners worldwide. Additional information can be found at [www.exaware.com](http://www.exaware.com). To purchase Exaware Routing solutions, please contact your Exaware Routing LTD representatives through <https://www.exaware.com/contact-us>.

© Copyright 2026 Exaware Networks LTD. The information contained herein is subject to change without notice. This document is for informational purposes only and does not set forth any warranty, expressed or implied, concerning any equipment, equipment feature, or service offered by Exaware Networks LTD. Exaware Networks LTD shall not be liable for technical or editorial errors or omissions contained herein.